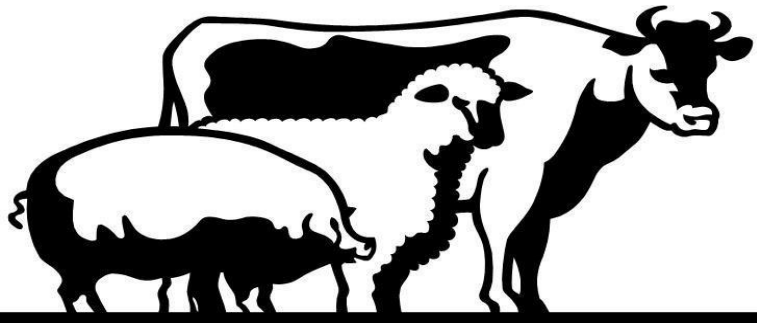


2021

Dolores County

&

4-H Fair



August - 12th - 14th

Junior Rodeos

July 10 & 11

August 14 & 15

August 28 & 29

September 11 & 12



**No Dogs
Allowed**

(Except in Small Animal Show)

**Please check for
changes due to
COVID-19**

CASH For Entries



General Entries for the Dolores County Fair could mean CASH!!! All general entry tickets will be entered in a door prize drawing. More entries equal a greater chance of winning. Have your entries ready by August 6th.

SCHEDULE OF EVENTS
DOLORES COUNTY & 4-H FAIR
AUGUST 6th and 7th

FAIRGROUNDS

4 miles West of Dove Creek on Highway 491/County Road 3.7

Junior Rodeos: **July 10 & 11, August 14 & 15, August 28 & 29, September 11 & 12**

Thursday, August 12th

9:00 am – Noon.....Enter County Exhibits at the Fairgrounds
9:00 am – 9:30 am.....Enter 4-H Exhibits
9:30 am – Noon.....4-H Judging
Noon – Closed to the public.....Exhibit Judging & Awarding
of Ribbons

Friday, August 13th

9:00 am – 6:00 pm.....Open to the public
4:00 pm – 6:00 pm.....Ice Cream Social
4:30 pm – 4:45 pm..... Small Animal Show Registration
5:00 pm – 6:00 pm.....Small Animal Show Judging
6:30 pm – 7:00 pm.....Check-out Exhibits (NO EXECEPTIONS!)

Saturday, August 14th

9:00 am.....Junior Rodeo
FFA/Vo-Ag Advisory Oyster Fry.....TBD

Sunday, August 14^h

9:00 am.....Junior Rodeo

The Dolores County Fair Board would like to encourage all area residents to enter a fair project. Please come out and take a look at the hard work put in by those who have shared their projects.

Please have ALL entries labeled with the correct departments/categories before you bring them to the fair! (Tags included in back of book)
Please label your tote/box with your name and phone #!

Please note the changes in the rules and regulations for 2021.

We would like to thank all of the sponsors that make our fair possible.

---AWARDS---

1. "Champion" and "Reserve Champion" ribbons will be awarded in each department, if qualified.
2. Ribbons will be awarded according to the Danish System. A blue, red, or white ribbon will be awarded to deserving entries.
3. Premiums will be paid on qualifying entries. No premiums will be paid on "exhibit only" categories.
4. Prizes will be awarded to highest total points (Sweepstakes) - \$15 in each department.
5. Point system for sweepstakes – highest points in each department:

Grand Champion.....	7 points
Reserve Grand Champion.....	6 points
Champion.....	5 points
Reserve Champion.....	4 points
Blue.....	3 points
Red.....	2 points
White.....	1 point

For information on the Fair, contact Gus Westerman, Oma Fleming or Joey Schultz at the Dolores County Extension Office (970) 677-2283.

For information on the Junior Rodeo contact Jeremy Redshaw (970)560-2491.

----- **Index** -----

Schedule of events.....	3
Awards.....	5
General Rules.....	7
Departments	
A. Art Show.....	9
B. Flower Show.....	9-12
C. Vegetables, Fruit.....	12
D. Baked Goods.....	13
E. Field Crops.....	15
F. Preserved Foods.....	15
G. Small Fancy Work	17
H. Large Fancy Works (Quilts).....	17
I. Crafts.....	19
J. Small Animals.....	20
K. 4-H Exhibits.....	20
Staff Members.....	21
Junior Rodeo.....	22

GENERAL RULES AND REGULATIONS

1. Only Dolores County and Dolores County School District resident entries are accepted in all classes except livestock.
2. No entry fees required in the general fair or junior livestock show, junior rodeo participants will have entry fees.
3. **EACH EXHIBITOR IS RESPONSIBLE TO READ THE REQUIREMENTS OF EACH DIVISION. IF EXHIBIT DOES NOT MEET SPECIFICATIONS, IT WILL NOT BE JUDGED.**
4. **Entries accepted only between 9:00 a.m. and 12:00 p.m. on Thursday, August 12th.**
5. EXHIBITS WILL NOT BE OPEN DURING JUDGING THURSDAY AFTERNOON, AUGUST 6TH
6. No item will be judged until it is entered in its proper department, division, and category, and has been assigned an exhibit number. All entries that do not meet the stated requirements will be disqualified.
7. All entries should have been completed (or harvested) within the previous 12 months.
8. There will be a **Junior (age 1-8)**, **Intermediate (age 9-16)**, and **Adult (age over 16)** division, open to the public, within each entry category, in addition to the special separate 4-H category open to Dolores County 4-H members ONLY. Juniors will be judged separately from adults for awards.
9. There will be an additional distinction between Professional and Amateur division in Fine Arts, Ceramics, Cake Decorating, and wherever else the judges shall deem appropriate.
10. Ribbons will be displayed on winning entries once judging has been completed.
11. Entries must be picked up **Saturday, August 14th, 12:00 pm to 1:00 pm. NO ENTRIES MAY NOT BE REMOVED PRIOR TO THIS. IF YOU ARE UNABLE TO PICK UP ENTRIES, YOU MAY MAKE ARRANGEMENTS TO HAVE THEM TAKEN TO THE EXTENSION OFFICE.**
12. Exhibitors will not be given the privilege of selecting where their entries shall be displayed.
13. Each exhibitor will be allowed only THREE ENTRIES PER CATEGORY, but are encouraged to bring other items that will be DISPLAY ONLY.
14. Exhibitors will be asked to sign a release from liability for each item entered.
15. No entry may be entered a second time in the Dolores County Fair.

Please use the tags provided in the back of the book and tag ALL entries!!

Department A: Art Show

- Each exhibitor will be allowed three entries per category; three oil, three sketch, etc. You may enter additional entries as “display only” that will not be judged.
- Only original works, never before shown at the Dolores County Fair, will be accepted.
- Drawings, paintings, sketches, collages, photographs, etc., must have a suitable frame or matting **ready to set up for display.**
- **In no case will the Fair Board be liable for loss or damage to any entry.**
- “Junior,” “Amateur” and “Professional” entries will be judged separately.

I Fine Arts, Adult Division

1. Oil: Representational (recognizable subject matter)
2. Oil: Nonrepresentational (Non-recognizable or nonobjective)
3. Acrylic: Representational
4. Acrylic: Nonrepresentational
5. Water Colors: Representational
6. Water Colors: Nonrepresentational
7. Drawings: Color, pastel, crayon, etc.
8. Drawings: Black and white, charcoal, pencil, ink
9. Drawings: With wash
10. Print – Any medium
11. Sand Paintings
12. Mixed media
13. Miniatures
14. Other

II Fine Arts, Junior & Intermediate

Same as Adult Division

III Photography, Adult Division

ENTRIES INCLUDING FRAME AND MAT

1. Black and white
2. Color
3. Special effects
4. Miscellaneous

IV Photography, Junior & Intermediate

Same as Adult Division

V Coloring

Same as Adult Division



Department B: Flowers, Foliage, Shrubs, & Tree Show

- All entries must have been grown in the exhibitor’s garden.
- Only three entries in each category may be made by the exhibitor.
- Classes which call for more than one blossom should have stems of uniform length.
- Entrants will provide own bottle or jar containers.
- The superintendents have the privilege of further subdividing the categories when advisable. Categories may be subdivided as to color, variety, and size.
- All house plants or other growing plants must have been in the exhibitor’s possession for at least three months.
- Entries must be clean, free of insects, no artificial luster and not hardened.
- Exhibits should be correctly named. In event of a tie, preference will be given named varieties.

I. Biennials

- Hollyhocks – 1 stem
- Pansy
 - 3 stems, 1 color (without foliage)
 - 3 stems, mixed color (without foliage)
- Dianthus
 - Carnation – 1 stem
 - Pink – 1 stem
 - Sweet Williams – 1 stem
- Violas
 - 1 ½ minimum, 3 stems, mixed colors, with foliage
 - 1 ½ minimum, 3 stems, one color, with foliage
 - Johnny Jump Ups, 3 stems, one color, with foliage
- Any other named variety – 3 stems
(Bushes or vines exhibit one stem or branch)

II. Annuals

- African Daisies – 3 blooms, any color
- Asters – 2 blooms, 1 variety
- Bachelor's Buttons – 3 blooms, any color
- Calendula – 3 blooms, any color
- Clarkia – 1 stem
- Cosmos – 1 bloom
- Marigolds
 - Small – 3 blooms
 - Large – 1 branch
- Nasturtiums
 - 3 stems – one color
 - 3 stems – mixed colors
- Petunias
 - Single
 - Small – one spray
 - Large – one spray
 - Double
 - Small – one spray
 - Large – one spray
 - California Giants
- Snapdragons
 - 2 spikes, one color
 - 2 spikes, mixed colors
 - 2 spikes, any other variety, varieties judged individually
- Sweet Peas
 - 3 stems, one color
 - 5 stems, mixed colors
- Sweet Sulton – 1 bloom
- Zinnia
 - Small – 1 blossom
 - Large – 1 blossom
- Alyssum
- Sunflower
- Calibrachoa
- Four O'clock
- Portulaca
- Any other specimen judged individually – 1 stem or blossom



Scale of Points – Horticulture:

Culture Perfection.....	50
Form, color Substance.....	20
Size (According to species)....	10
Grooming.....	10
Condition.....	10
Total.....	100

III. Perennials

- Achillea
 - White – 1 stem
 - Pink – 1 stem
 - Yellow – 1 stem
- Baby's Breath
 - Single or Double
- Columbine – 1 stem
- Gallardia – 2 blooms, any variety
- Delphinium
 - Single giant pacific – 1 spike
 - Double giant pacific – 1 spike
 - 1 stem, any other variety
- Gloriosa Daisy
 - Single – 1 bloom
 - Double – 1 bloom
- Shasta Daisy
 - Single – 3 blooms
 - Double – 3 blooms
- Phlox – 1 stem
- Vernica
- Tansy
- Sabria
- Russian Sage
- Hibiscus
- Hops
- Salvia
- Blazing Star
- Geranium Ivy
- Geranium
- Four O'clocks
- Black Eyed Suzan
- Lavender
- Begonia
- Other

IV. Bulbs, Corms, Tubers

- Anemone – 1 stem
- Ranuncullas – 1 stem
- Tigridia – 1 stem
- Gladiolas – 1 stem
 - Each variety judged separately
- Any other variety – 1 stem

V. Dahlias

Should have long stems with 2 leaves

- Large
 - Over 8" – 1 bloom
- Medium
 - 6" to under 8" – 1 bloom
 - 4" to under 6" – 1 bloom
- Small
 - Miniature, any type up to 4", 2 blooms
 - Ball type, under 2", 3 blooms
- Large
 - Florets measuring 5 ½", 1 spike
- Medium
 - Florets measuring over 4 ½" to 5 ½", 1 spike
 - Florets measuring 2 ½" to 4 ½", 1 spike
- Small
 - Florets measuring 2 ½" to 3 ½", 1 spike
 - Florets measuring 1 ½" to 2 ½", 1 spike

**Scale of Points –
Plant Collections:**

Designs.....	35
Selection of Plants.....	25
Relationship.....	25
Condition.....	15
Total.....	100

...Continued from previous page

VI. Roses

1. Hybrid – 1 stem with foliage
2. Miniature – 1 stem
3. Floribunda – 1 stem
4. Grandiflora – 1 stem
5. Old Garden Roses, varieties judged individually – 1 stem
6. Climbing Roses

VII. Foliage, Shrubs, Trees

One stem or branch, total exhibit not to exceed 20" overall

1. Fruited Tree Branch
 - a. Edible
 - b. Ornamental
2. Any Vine
3. Evergreen
 - a. Shrub
 - b. Tree
4. Flowering Shrub
5. Any other foliage plants

VII. House Plants

Any specimen plant that is an individual plant, well cultivated and groomed. Must have been in the exhibitor's possession for at least 3 months. Each variety is to be judged separately.

1. House Plants – Flowering
 - a. Any named variety
2. Flower Arrangements
 - a. Artificial Flowers
 - b. Fresh Flowers
 - c. Dried Flowers
3. House Plants – Foliage
 - a. Any named specimen
4. Plant Collections
Such as dish gardens, hanging baskets, terrariums, etc.



**Department C:
Vegetables & Fruit**

Fruits and Vegetables must be cleaned and free of dirt and insects!

I. Fruits

1. Apples, 6 any variety
2. Grapes, 3 bunches, any variety
3. Strawberries, 1 pint box
4. Raspberries, 1 pint box
5. Gooseberries, 1 pint box
6. Apricots, 6
7. Cherries, ½ pound
8. Peaches, 6 any variety
9. Blackberries, 1 pint box
10. Plums, 6 any variety
11. Nuts, 1 pint box
12. Other (can be grouped specifically if there is competition)

Maturity: if it can be used in food in any form, it's acceptable

II. Displays

1. Best individual display of vegetables (not less than 8 varieties)
2. Largest vegetable, any variety (judged on attractiveness)

III. Herbs

1. Dill, 5 heads
2. Garlic, 2 bulbs
3. Parsley, 12 stalks
4. Other – enough to fill a plate

IV. Vegetables

No roots or extra leaves

1. Beans
 - a. Green snap, ½ pound
 - b. Yellow snap, ½ pound
2. Beets
 - a. Table, 6
 - b. Tops, 12 leaves
3. Broccoli, 1 head
4. Cabbage, 1 head
5. Carrots, table, 6
6. Cauliflower, 1 head
7. Cucumbers, 3

Continued on next page...

...Continued from previous page

8. Lettuce
 - a. Head, 1 head
 - b. Loose leaf, 1 bunch
9. Onions
 - a. Globe type, 3
 - b. Green, 3
10. Parsnips, 6
11. Peas
 - a. Black-eyed, ½ pound
 - b. Snap Peas, ½ pound
 - c. Snow peas, ½ pound
12. Peppers
 - a. Chili, same type, 3
 - b. Sweet, 3
 - c. Jalapenos, 3
 - d. Other, 3
13. Potatoes, one variety, 3
14. Pumpkin, 1
15. Spinach, 12 leaves
16. Squash
 - a. Crookneck, 3
 - b. Straight, 3
 - c. Summer, 3
 - d. Winter, 1
 - e. Zucchini, 3
17. Swiss Chard, 12 leaves
18. Tomatoes
 - a. Green, stems on, 3
 - b. Ripe, 3
 - c. Cherry Tomatoes, 6
19. Turnips, 6
20. Radishes, 6
21. Okra, 6
22. Other (can be grouped specifically if there is competition)

**PRODUCE MUST BE OF MARKET
QUALITY: NEITHER OVER NOR UNDER**



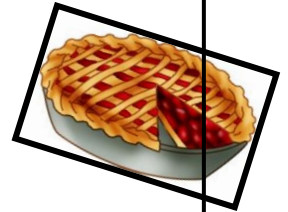
Department D: Baked Goods, Decorated Cakes & Candies

- All baked goods and candies must be on a clean, sturdy paper plate and covered with clear plastic wrap.
- No commercially prepared dough or mix will be accepted from breads, rolls, muffins, or cakes.
- One champion and one or two reserve champions may be awarded in each of the following sections: breads, homemade cake, icing, foreign baking, candies, pies, cookies, and decorated cakes.

Include all recipes for all baked goods

I. Bread

1. All breads
 - a. Loaf – 1
 - b. Rolls – 6 per entry
 - c. Muffins – 6 per entry



II. Homemade Cakes

1. Any variety
Icing displayed on a two-layer cake will be judged on flavor, consistency, and appearance. (Please note: Decorated cakes should be entered in section decorated cakes and forms.)

III. Pies

Lattice tops accepted, no cream pies accepted that need refrigeration. (One or two crusts acceptable)

IV. Candy

Minimum of 6 pieces per entry (cut) any variety

V. Cookies

1. Dropped – 6 cookies per plate
2. Pressed – 6 cookies per plate

VI. Decorated Cakes

(Form may be substituted for cakes)

1. Amateur
2. Professional

VII. Other

As deemed necessary

VIII. Junior Division

Same as Adult Division

Department E: Field Crops

Entries can be made from: Sheaves of small grain and grasses must be over 3" in diameter at the center ties; alfalfa and clover sheaves must be 6" in diameter at the center. Divisions will be made as necessary for irrigated or dry land crops.

I. Corn

- a. 3 stalks, any variety
- b. Qt, any variety

II. Fall Wheat

- a. Sheaf, any variety
- b. Qt, any variety

III. Oats

- a. Sheaf, any variety
- b. Qt, any variety

IV. Fall Rye

- a. Sheaf, any variety
- b. Qt, any variety

V. Barley

- a. Sheaf, any variety
- b. Qt, any variety

VI. Alfalfa

- a. Sheaf, any variety
- b. Qt, any variety

VII. Clover

- a. Sheaf, any variety
- b. Qt, any variety

VIII. Baled Hay

- a. Small bale

IX. Grasses

- a. Sheaf, any variety
- b. Qt, any variety

X. Field Beans

- a. Qt, any variety
- b. Plants, any variety

XI. Field Peas Plants

- a. Qt, any variety
- b. Plants, any variety

XII. Other Crops

- a. Quinoa – Sunflower – Other
 1. 3 stalks, any variety
 2. Qt, any variety



Department F: Canned/Dried/ Preserved/Foods

- Please include the name/variety of food, method of preparation (canned or boiled) and recipe source used.
- Labeled and dated as to when canned. Only goods since August 2019 are eligible.
- One jar constitutes an entry.
- Use standard, clear canning jars, no mayonnaise jars. (Please wipe exterior clean)
- Preserves, jellies, butters, jams, pickles, and relishes must be in standard or jelly glasses.
- All entries may be opened by judges.
- Canned food will be judged on:
Pack- full, attractive, yet practical
Liquid- covers top of fruits and vegetables
Color- natural color, not faded
Quality of product- distinct uniform pieces

A. Boiling Water Canning

I. Canned Fruit

Any variety

II. Canned Vegetables

Any variety

III. Canned Meats

Any variety

IV. Jellies and Jams

Any variety

V. Pickled Products

Vegetables, fruit, sauces, other garnishes

VI. Dried Foods

Herbs, fruits, leather, jerky, pasta, etc.

VII. Honey & Fruit Syrup

Any variety, at least one pint in a clean jar, need to be standard jars or sealed.

VIII. Juice

Any variety

IX. Wine, Beer, Ale Fermented Beverages

X. Family Exhibit

Canned goods (9 jar display – 3 jars of fruit or jellies/different kinds; 3 jars of vegetables or meats/different kinds; 3 jars of pickles, relishes or garnishes/different kinds).

XI. Other

As deemed necessary by the judges.

B. Pressure Canning

Same as Boiling Water Canning.

Department G: Small Fancy Works

When entries are taken, please specify large or small items and the category in which you wish to enter.

I. Knitted Articles Hand or Machine

1. Crib afghan
2. 3-Piece Baby set (Jacket, cap and booties)
3. Edgings
4. Mittens
5. Vests
6. Garment (Large)
7. Garment (Small)
8. Poncho
9. Shawl
10. Machine knitted
11. Doll Dresses
12. Miscellaneous

II. Cutwork Articles

1. Pillow cases
2. Tablecloth
3. Wall Hangings
4. Rugs

III. Hand Embroidered

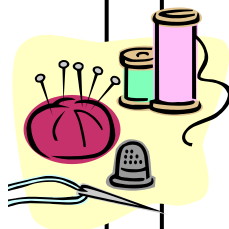
1. Dresser scarf or vanity set
2. Luncheon cloth, with or without napkin
3. Pillow cases
4. Swedish weaving, any article
5. Decorated clothing (denim, etc.)
6. Tea towels (min. of 4)
7. Miscellaneous

IV. Fancy Pillows

1. Embroidered
2. Smocked
3. Painted
4. Pillow kits
5. Rugs
6. Hooked
7. Braided
8. Crocheted
9. Miscellaneous

V. Needle Point

VI. Cross- Stitch



VIII. Crocheted Articles

1. Crib Afghan
2. Starched ornaments
3. 3-Piece baby set (Jacket, cap and booties)
4. Edgings
5. Mittens
6. Vests
7. Garments, large (as dress, suit)
8. Garment, small (as sweater, etc.)
9. Dresser scarf, buffet scarf, table cloth, etc.
10. Place mats
11. Doily, ruffled, starched flat
12. Pot holder
13. Doll dresses
14. Other

IX. Clothing

15. 1. Construction
16. 2. Decorate your duds
17. 3. Other

Department H: Large Fancy Works

I. Quilting

1. Hand Quilted
 - a. Appliqué
 - b. Table Runner
 - c. Wall Hanging
 - d. Pillow
 - e. Bed Quilt
 - f. Baby Quilt
2. Machine Quilted
 - a. Appliqué
 - b. Table Runner
 - c. Wall Hanging
 - d. Pillow
 - e. Bed Quilt
 - f. Baby Quilt
3. Jr. Quilts
 - a. Appliqué
 - b. Table Runner
 - c. Wall Hanging
 - d. Pillow
 - e. Bed Quilt
 - f. Baby Quilt
4. Other

II. Afghans

1. Knitted
 - a. Large – 40" x 60"
 - b. Small
2. Crocheted
 - a. Large
 - b. Small
3. Cro-Kit
4. Broomstick
5. Other

Department I: Crafts

- All kits entered will be grouped together for judging on the basis of skill, not creative ability.
 - All jewelry should be pinned on a piece of fabric and in a box.
 - Exhibitor will not be given the privilege of selecting where his/her entries will be displayed
1. Ceramics
 - a. Hand formed
 - b. Molded
 - c. Unusual finishes & techniques
 - d. Other
 2. candles
 - a. Conventional molded designs
 - b. Carved & other unusual designs
 3. Jewelry
 - a. Silver
 - b. Lapidary (stone)
 - c. Other
 4. Wood Craft
 - a. Carpentry
 - b. Driftwood & other natural forms
 - c. Woodcarving
 - 1) Machine
 - 2) Hand
 - d. Other
 5. Dough Art
 6. Leather (other than garments, see clothing)
 7. Macramé
 8. Decoupage
 9. Dolls
 10. Mosaics
 11. Metal work
 - a. Large
 - b. Small
 12. Rope Crafts
 13. Wool Crafts
 14. Puzzles
 15. Other



15. Models (Junior division only)
 16. Shell craft
 17. Tole painting
 18. Stained glass
 19. String art
 20. Doll houses
 21. Off loom weaving
 22. Kits of all kinds
 23. Beadwork
 24. Machine Sewing, non- garment
 25. Other
- (Judges may specify additional categories at their own discretion)

AUGUST 13TH

Entries: 4:45 p.m. – 5:00 p.m.
Show/Judging: 5:00 p.m. – 6:00 p.m.

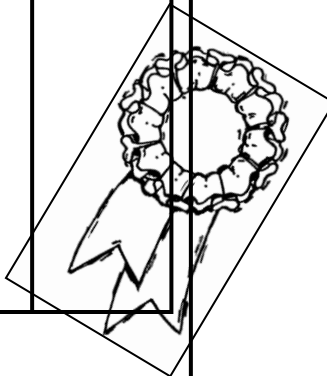
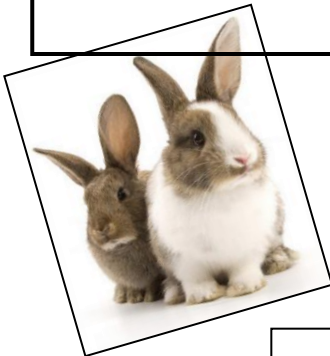
Department J: Small Animal Show

- I. Junior - Ages 3-8
 - A. Goats
 - B. Sheep
 - C. Rabbits
 - D. Poultry
 - E. Guinea Pigs
 - F. Cats
 - G. Dogs
- II. Intermediate - Ages 9-12
Same as Junior's

There will be no cattle, rodents, reptiles, or anything larger than a sheep allowed in show.

All animals must be in cages and/or pens or on a leash.

All animals must be able to be controlled by the entrant



Department K: 4-H Exhibits

See Colorado State 4-H Fair Book for all classes. Entries taken from 9:00-9:30 a.m. on August 12th. Will be judged on the Danish System. Interview judging will take place 9:30 a.m. to noon, and will be part of the scoring. Please specify that your entry is a 4-H project when entering.

All entries MUST be picked up Saturday,

August 14th from 12:00 p.m. to 1:00 p.m.

NO ENTRIES MAY BE REMOVED PRIOR TO THIS. IF YOU ARE UNABLE TO PICK UP ENTRIES, YOU MAY MAKE ARRANGEMENTS TO HAVE THEM TAKEN TO THE EXTENSION OFFICE.